


BOSCH

Invented for life

FLM-420-I2 Input Interface Modules



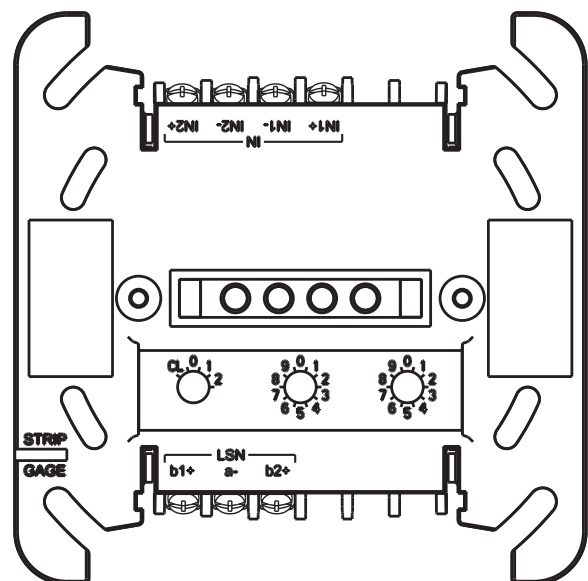
- ▶ Line monitoring when operating with EOL resistor
- ▶ Contact monitoring
- ▶ Voltage monitoring
- ▶ Individual monitoring of the two inputs
- ▶ Maintains LSN loop functions in the event of wire interruption or short-circuit thanks to two integrated isolators

The FLM-420-I2 Input Interface Modules monitor up to two inputs.

They are 2-wire LSN elements for connection to the Local SecurityNetwork LSN improved version with the enhanced functionality.

System Overview

FLM-420-I2-D

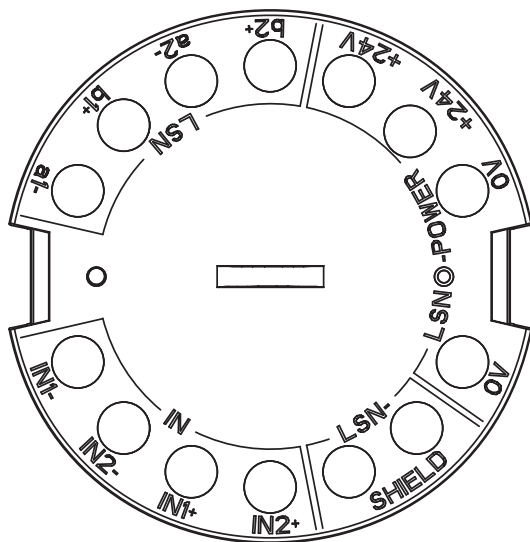


Description

IN1+ | IN1-
IN2+ | IN2-
LSN b1+ | a- | b2+

Connection

Input 1
Input 2
LSN (in/out)

FLM-420-I2-E / FLM-420-I2-W

| Description | Connection |
|--|---|
| IN1- IN1+ | Input 1 |
| IN2- IN2+ | Input 2 |
| LSN-SHIELD | Shielding cable (if available) |
| LSN POWER 0 V 0 V +24 V +24 V | LSN power supply (supports for looping through) |
| LSN a1- b1+ a2- b2+ | LSN (in/out) |

Functions

Monitoring functions

The FLM-420-I2 Input Interface Modules offer three monitoring functions:

1. Monitoring of a line with EOL resistor
2. Monitoring of a potential-free contact
3. Voltage monitoring

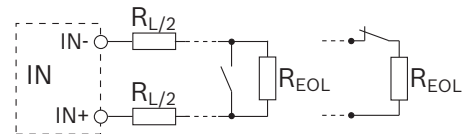
The monitoring functions can be selected for the two inputs individually by address setting via the programming software.

Line monitoring with EOL resistor

Operation with EOL resistor can be programmed for each input individually. The standard EOL resistor is 3.9 kΩ.

The interface module detects

- Standby
- Triggering in the event of line interruption
- Triggering in the event of a short circuit.

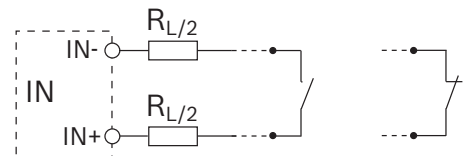


| Position | Description |
|--------------|---|
| R_{Σ} | Overall line resistance with $R_{\Sigma} = R_{L/2} + R_{L/2} + R_{EOL}$ |
| $R_{L/2}$ | Line resistance |

The following line conditions will be definitely detected if the overall line resistance is within the specified ranges:

| Line condition | Overall line resistance R_{Σ} |
|----------------|--------------------------------------|
| Standby | 1500 Ω to 6000 Ω |
| Interruption | > 12.000 Ω |
| Short circuit | < 800 Ω |

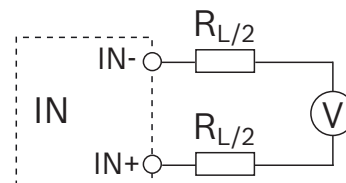
Contact monitoring



| Position | Description |
|-----------|---|
| $R_{L/2}$ | Line resistance with $R_{L/2} + R_{L/2} \leq 50 \Omega$ |

The interface module evaluates the operating conditions "open" or "closed". The normal operating condition can be programmed for each input. Contact monitoring is carried out with a pulse intensity of 8 mA. The module detects signals from a duration of 300 ms.

Voltage monitoring



| Position | Description |
|-----------|---|
| $R_{L/2}$ | Line resistance with $R_{L/2} + R_{L/2} \leq 50 \Omega$ |

Voltage monitoring is carried out between 0 V DC and 30 V DC. The programming software can be used to select two threshold values.

Address switches

The addresses of the interface modules are set using:

- DIP switches for FLM-420-I2-E and FLM-420-I2-W
- Rotary switches for FLM-420-I2-D.

In improved version LSN mode, the operator can select automatic or manual addressing with or without auto-detection.

| Address rotary switches | Address DIP switches | Operating mode |
|-------------------------|----------------------|--|
| 0 0 0 | 0 | Loop/stub in improved version LSN mode with automatic addressing (T-taps not possible) |
| 0 0 1 - 2 5 4 | 1 – 254 | Loop/stub/T-taps in improved version LSN mode with manual addressing |
| CL 0 0 | 255 | Loop/stub in LSN mode classic |

LSN features

Integrated isolators ensure that function is maintained in the event of a short circuit or line interruption in the LSN loop. A fault indication is sent to the fire panel.

Features of LSN improved version

The interface modules in the 420 series offer all the features of improved LSN technology:

- Flexible network structures including T-tapping without additional elements
- Up to 254 LSN-improved elements per loop or stub line
- Unshielded cable can be used

Interface variants

The Input Interface Modules are available in various designs:

- FLM-420-I2-E type in-built:
 - Can be built in to standard device boxes in accordance with EN 60670 (e.g. below standard switch programs)
 - For space-saving installation in devices
- FLM-420-I2-W type wall-mount (with cover):
 - Can be built in to standard device boxes in accordance with EN 60670
 - For surface mounting in conjunction with the FMX-IFB55-S interface box.
- FLM-420-I2-D type DIN rail:
 - For installation on a DIN rail in accordance with EN 60715 with included adapter
 - Can be built in to a FLM-IFB126-S surface-mounted housing.

Certifications and Approvals

Complies with

- EN54-17:2005
- EN54-18:2005

| Region | Certification | |
|---------|---------------|--|
| Germany | VdS | G 207076 FLM-420-I2-D; FLM-420-I2-E; FLM-420-I2-W |
| Europe | CE | FLM-420-I2-W/-E FLM-420-I2-D |
| | CPD | 0786-CPD-20288 FLM-420-I2-D 0786-CPD-20287 FLM-420-I2-W, -E |
| | MOE | UA1.016-0070269-11 FLM-420-I2-W_FLM-420-I2-E_FLM-420-I2-D |

Installation/Configuration Notes

- Can be connected to the fire panels FPA-5000 and FPA-1200.
- Programming is done with the programming software of the fire panel.
- The LSN connection is established via the two wires on the LSN line.
- A maximum cable length of 3 m is permitted per input.
- When mounting the in-built type interface module below a switch, a minimum depth of the device box of 60 mm is recommended.
- The in-built (-E) and wall-mount (-W) versions are fitted with terminals to allow a second wire pair to be looped through to the LSN power supply of subsequent elements.

Parts Included

| Type | Qty. | Component |
|--------------|------|---|
| FLM-420-I2-E | 1 | Input Interface Module, type in-built |
| FLM-420-I2-W | 1 | Input Interface Module, type wall-mount, with cover and accessories |
| FLM-420-I2-D | 1 | Input Interface Module, type DIN rail, with adapter and light pipe |

Technical Specifications

Electrical

| | | |
|-------------------------------------|--|--|
| LSN | | |
| • LSN input voltage | 15 V DC to 33 V DC | |
| • Max. current consumption from LSN | 10.4 mA | |
| Inputs | 2, independent of each other | |
| Line monitoring with EOL | | |
| • EOL resistor | Nominal 3.9 kΩ | |
| • Overall line resistance | <ul style="list-style-type: none">• During standby: 1500 to 6000 Ω• Interruption: > 12.000 Ω• Short circuit: < 800 Ω | |

Contact monitoring

- Max. current (current peak) 8 mA

Voltage monitoring

- Voltage range 0 to 30 V DC
- Input resistance $\geq 50 \text{ k}\Omega$
- Selectable threshold values
 - 0.8 V DC ($\pm 0.3 \text{ V DC}$)
 - 3.3 V DC ($\pm 0.3 \text{ V DC}$)
 - 10.2 V DC ($\pm 0.5 \text{ V DC}$)
 - 21.2 V DC ($\pm 0.5 \text{ V DC}$)

Mechanical

Connections

- FLM-420-I2-E / W 14 screw terminals
- FLM-420-I2-D 7 screw terminals

Permitted wire cross-section

- FLM-420-I2-E / W 0.6 to 2.0 mm²
- FLM-420-I2-D 0.6 to 3.3 mm²

Address setting

- FLM-420-I2-E / W 8 DIP switches
- FLM-420-I2-D 3 rotary switches

Housing material

- FLM-420-I2-E / W ABS/PC blend
- FLM-420-I2-D with adapter PPO (Noryl)

Color

- FLM-420-I2-E / W Signal white, RAL 9003
- FLM-420-I2-D with adapter Off-white, similar to RAL 9002

Dimensions

- FLM-420-I2-E Approx. 50 mm x 22 mm (Ø x H)
- FLM-420-I2-W Approx. 76 mm x 30 mm (Ø x H)
- FLM-420-I2-D with adapter Approx. 110 x 110 x 48 mm (W x H x D)

Weight

- FLM-420-I2-E Approx. 35 g / 130 g
- FLM-420-I2-W Approx. 55 g / 155 g
- FLM-420-I2-D Approx. 150 g / 235 g

Environmental conditions

Permitted operating temperature -20 °C to +65 °C

Permitted storage temperature -25 °C to +80 °C

Permitted rel. humidity < 96% (non-condensing)

Classes of equipment as per IEC 60950 Class III equipment

Protection class as per IEC 60529 IP 30

System limiting values

Max. cable length per input 3 m

Ordering Information

FLM-420-I2-E Input Interface Module **FLM-420-I2-E**
with 2 monitored inputs, flush-mount type

FLM-420-I2-W Input Interface Module **FLM-420-I2-W**
with 2 monitored inputs, wall-mount type,
with cover

FLM-420-I2-D Input Interface Module **FLM-420-I2-D**
with 2 monitored inputs, DIN rail type

Accessories

FLM-IFB126-S Surface-mounted Housing **FLM-IFB126-S**
as retainer for the interface modules series 420 type DIN rail (-D) or spare housing for type surface-mount (-S)

FMX-IFB55-S Interface Box Surface-mount **FMX-IFB55-S**
for interface modules of wall mount type in the 420 series, surface-mount

Americas:
Bosch Security Systems, Inc.
130 Perinton Parkway
Fairport, New York, 14450, USA
Phone: +1 800 289 0096
Fax: +1 585 223 9180
security.sales@us.bosch.com
www.boschsecurity.us

Europe, Middle East, Africa:
Bosch Security Systems B.V.
P.O. Box 80002
5600 JB Eindhoven, The Netherlands
Phone: +31 40 2577 284
Fax: +31 40 2577 330
emea.securitysystems@bosch.com
www.boschsecurity.com

Asia-Pacific:
Robert Bosch (SEA) Pte Ltd, Security Systems
11 Bishan Street 21
Singapore 573943
Phone: +65 6258 5511
Fax: +65 6571 2698
apr.securitysystems@bosch.com
www.boschsecurity.asia

Represented by