

Features

Individual addressable manual fire alarm stations with:

- Power and data supplied via MX Technology addressable loop communications using a single wire pair
- EMI compatibility
- Address is easily programmed with the MX Service Tool
- Internally mounted addressable module is similar to the design of the 4090-5201 Mini-IAM
- Available as single action or double action breakglass operation
- Pull lever that protrudes when alarmed
- Break-rod supplied (use is optional)
- UL listed to Standard 38

Compatibility:

- For use with Simplex® 4100ES, 4010ES, and 4100U Series fire alarm control panels equipped with an MX Loop Module
- Refer to data sheet S4100-0059 for MX Loop Module details

Compact construction:

- Electronics module enclosure minimizes dust infiltration
- Allows mounting in standard electrical boxes
- Screw terminals for wiring connections

Tamper resistant reset key lock (keyed same as Simplex fire alarm cabinets)

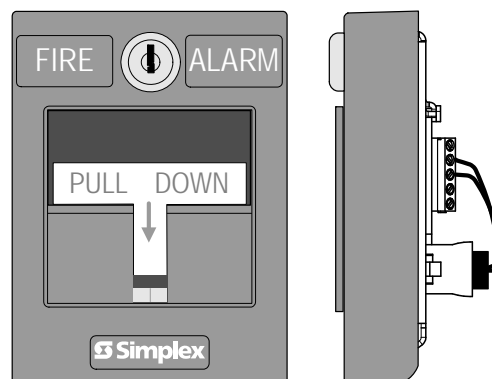
Multiple mounting options:

- Surface or semi-flush with standard boxes or matching Simplex boxes
- Flush mount adapter kit
- Adapters are available for retrofitting to commonly available existing boxes

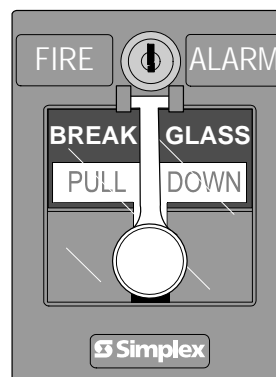
Description

MX addressable stations contain an integral addressable module that constantly monitors status and communicates with an MX Loop Module located in the host fire alarm control panel.

* Listings and approvals under Simplex Time Recorder Co. are the property of Tyco Fire Protection Products.



4099-5201 Single Action Manual Station
(front and side view)



4099-5202 Double Action
(Breakglass) Manual Station

Operation

Activation of the 4099-5201 single action manual station requires a firm downward pull to activate the alarm switch. Completing the action breaks an internal plastic break-rod (visible below the pull lever, use is optional). The use of a break-rod can be a deterrent to vandalism without interfering with the minimum pull requirements needed for easy activation. The pull lever latches into the alarm position and remains extended out of the housing to provide a visible indication.

Double Action Stations (Breakglass) require the operator to strike the front mounted hammer to break the glass and expose the recessed pull lever. The pull lever then operates as a single action station.

Station reset requires the use of a key to reset the manual station lever and deactivate the alarm switch. (If the break-rod is used, it must be replaced.)

Station testing is performed by physical activation of the pull lever. Electrical testing can be also performed by unlocking the station housing to activate the alarm switch.

MX Technology Addressable Manual Station Product Selection

Addressable Manual Stations, Red Housing with White Letters and White Pull Lever

Model	Description
4099-5201	Single action operation
4099-5202	Double action, Breakglass operation

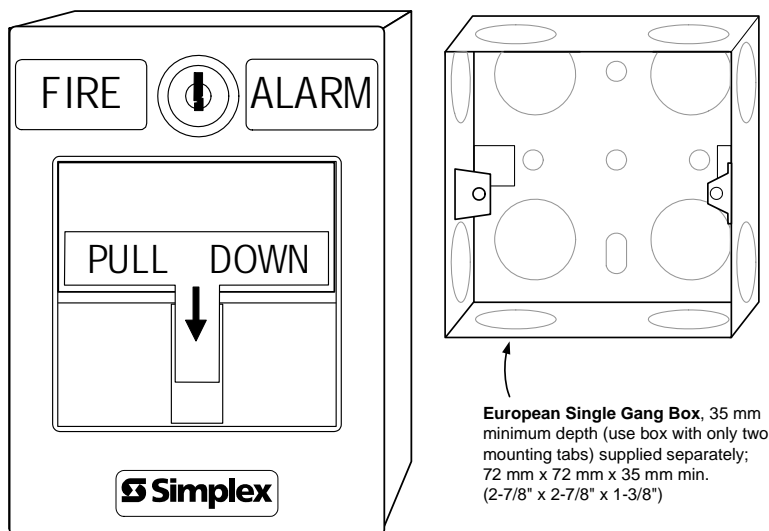
Accessories

Model	Description
2975-9178	Surface mount steel box, red
2975-9022	Cast aluminum surface mount box, red
2099-9813	Semi-flush trim plate for double gang switch box, red
2099-9814	Surface trim plate for Wiremold box V5744-2, red
2099-9819	Flush mount adapter kit, black
2099-9820	Flush mount adapter kit, beige
2099-9803	Replacement breakglass
2099-9804	Replacement break-rod
2099-9828	Institutional cover kit for field installation on 4099-9001

Specifications

Power and Communications	MX Loop, 1 address per manual station
Current	0.46 mA, standby and alarm
Address Means	Select with MX Service Tool
Wire Connections	Terminal blocks, for wire size 20 to 14 AWG (0.5 to 2.5 mm ²)
UL Listed Temperature Range	32° to 120° F (0° to 49° C) intended for indoor operation
Humidity Range	Up to 93% RH at 100° F (38° F)
Housing Color	Red with white raised lettering
Material	Housing and pull lever are Lexan polycarbonate or equal
Pull Lever Color	White with red raised lettering
Housing Dimensions	5" H x 3 3/4" W x 1" D (127 mm x 95 mm x 25 mm)
Installation Instructions	579-948

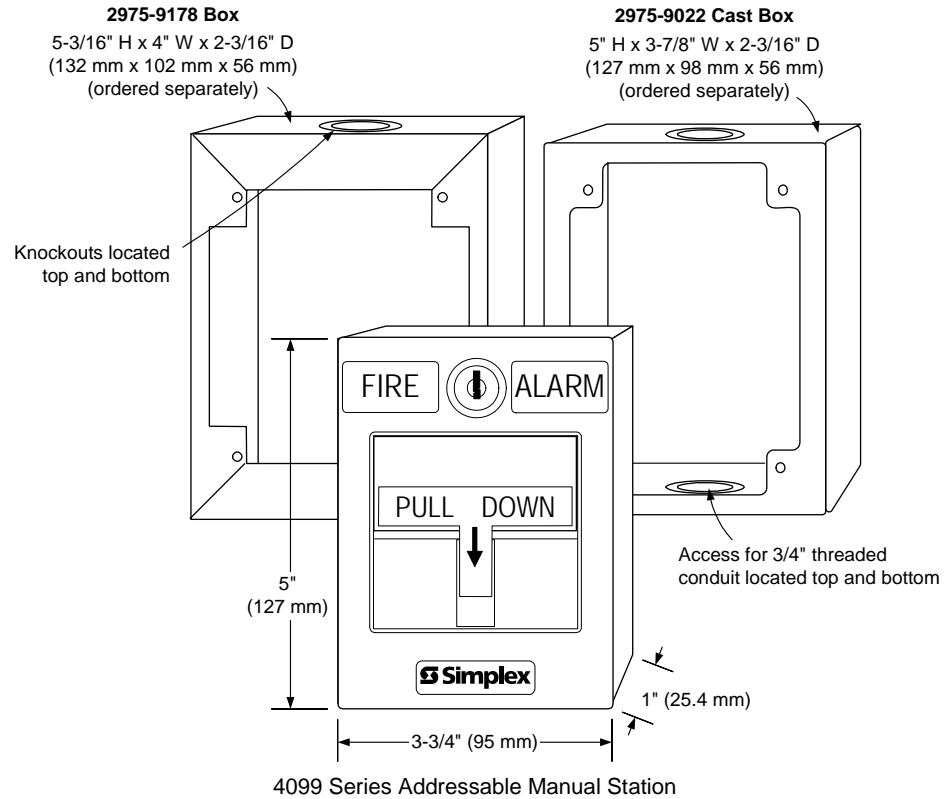
Addressable Manual Station Semi-Flush Mounting



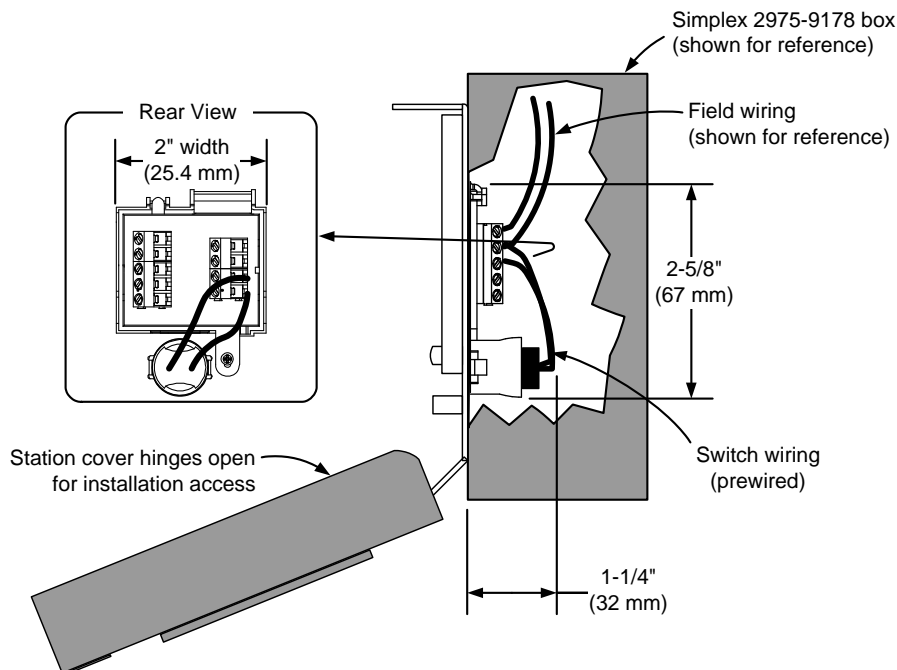
Addressable Manual Stations Surface Mounting

Preferred Mounting. For surface mounting of these addressable manual stations, the preferred electrical boxes are shown in the illustration to the right.

Additional Mounting Reference. Refer to page 4 for Wiremold box mounting compatibility.



Surface Mount Side View with Internal Detail



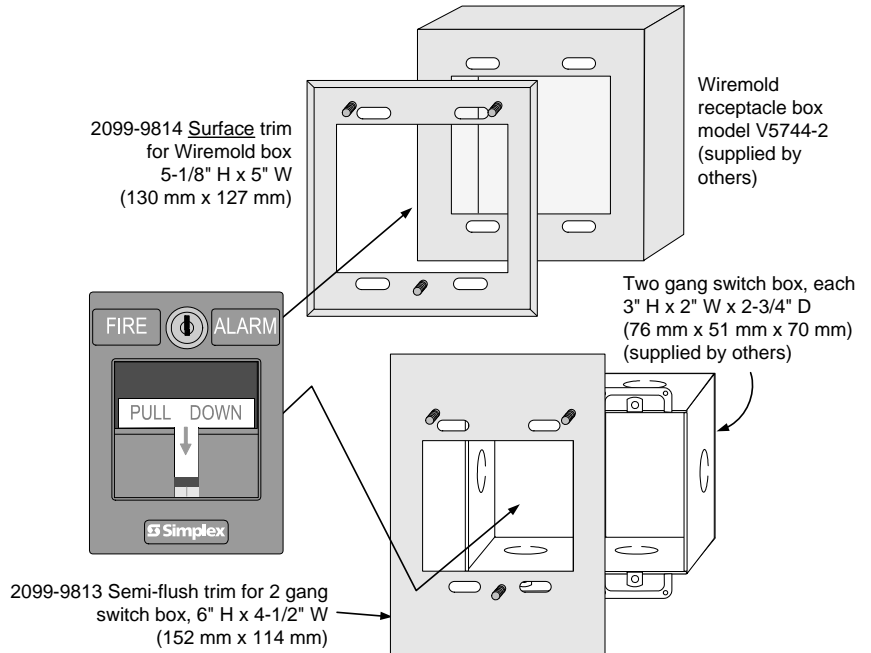
Application Reference

Refer to NFPA 72, the *National Fire Alarm and Signaling Code*, and all applicable local codes for complete requirements for manual stations. The following summarizes the basic requirements.

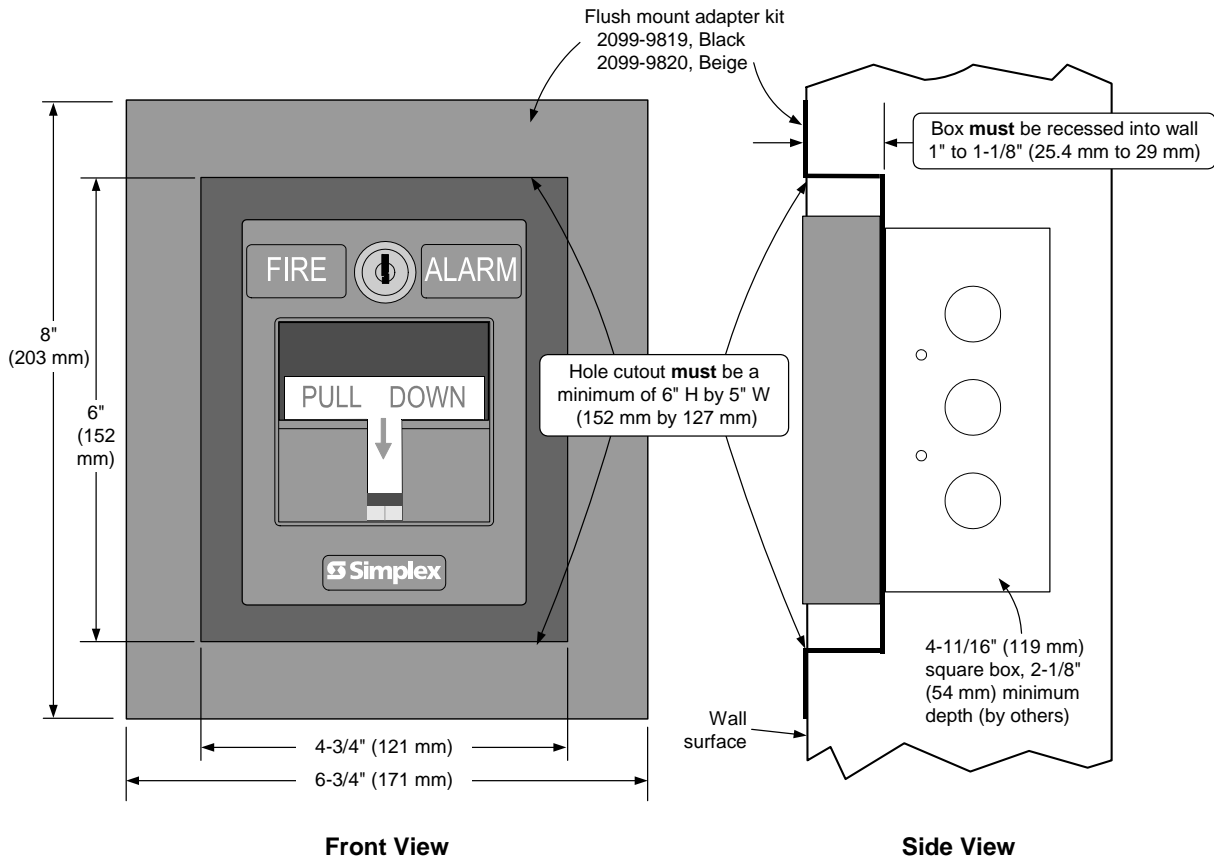
1. Stations shall be located in the normal path of exit and distributed in the protected area such that they are unobstructed and readily accessible.
2. Mounting shall be with the operable part not less than 3 ½ ft (1.1 m) and not more than 4 ½ ft (1.37 m) above floor level.
3. At least one station shall be provided on each floor. Additional stations shall be provided to obtain a travel distance not more than 200 ft (61 m) to the nearest station from any point in the building.
4. When manual station coverage appears limited in any way, additional stations should be installed.

Addressable Manual Station, Additional Mounting Information

For retrofit and new installations, additional compatible mounting boxes and the required adapter plates are shown in the illustration to the right.



Addressable Manual Station, Flush Mounting Information



TYCO, SIMPLEX, and the product names listed in this material are marks and/or registered marks. Unauthorized use is strictly prohibited. NFPA 72 and National Fire Alarm Code are trademarks of the National Fire Protection Association (NFPA). Lexan is a trademark of the General Electric Co. Wiremold is a trademark of the Wiremold Company.



Tyco Fire Protection Products • Westminister, MA • 01441-0001 • USA

S4099-0003-1 11/2011

www.simplexgrinnell.com

© 2011 Tyco Fire Protection Products. All rights reserved. All specifications and other information shown were current as of document revision date and are subject to change without notice.